

## STOCKLOT-LIST

Due to a clearance of our warehouse in Hamburg we can offer you following special offers!

Subject to prior sale.

Changes, printing and other errors reserved.

Ex-warehouse: Hamburg, Germany

### **1. MOSA wall-tiles 20x20 cm:**

- Manufacturer: MOSA
- Colors / quantities:
  - White Gray marbled (780) = approx. 384 m<sup>2</sup>
  - Cream matt (3200) = approx. 384 m<sup>2</sup>
  - Black matt (3220) = approx. 288 m<sup>2</sup>
  - Cream matt (3400) = approx. 96 m<sup>2</sup>
  - White with stripes pattern (3500) = approx. 576 m<sup>2</sup>



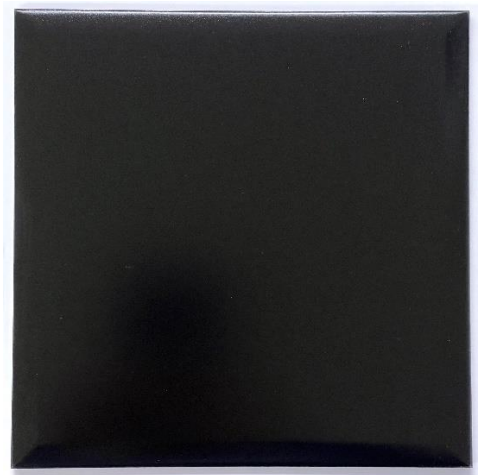
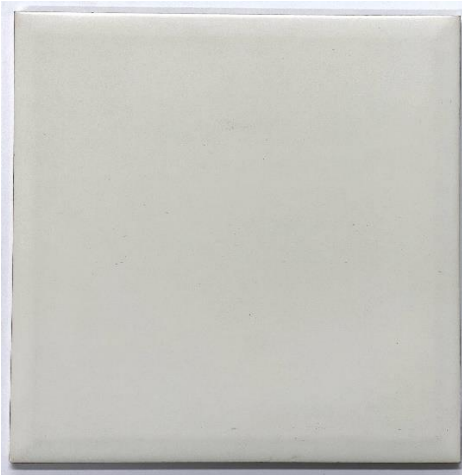
- Size: 20x20 cm
- Very solid white biscuit (not porous!)
- Excellent coating
- Coating also on edges
- High-quality finish

### **MADE IN HOLLAND**

- Euro-pallets with uniform item (no mixed leftover-pallets!)
- Approx. 96m<sup>2</sup> per palette
- Weight: approx. 1 t per palette
- 20" Container: approx. 2.000 - 2.200 m<sup>2</sup>

Export-price (excl. VAT) for total amount of approx. 1728 m<sup>2</sup>: **EUR 5,90/m<sup>2</sup>**

Sample pictures:



## **2. MOSA wall-tiles 15x15 cm:**

- Manufacturer: MOSA
- Color: Ivory / Cream (8670) = approx. 1.700 m<sup>2</sup>
- Size: 15x15 cm
- Very solid white biscuit (not porous!)
- Excellent coating
- Coating also on edges
- High-quality finish



### **MADE IN HOLLAND**

- Euro-pallettes with uniform item (no mixed leftover-pallettes!)
- Approx. 112,5 m<sup>2</sup> per palette
- Weight: approx. 1 t per palette
- 20" Container: approx. 2.000 - 2.200 m<sup>2</sup>

Export-price (excl. VAT) for total amount of approx. 1.700 m<sup>2</sup>: **EUR 2,79/m<sup>2</sup>**

Sample pictures:



### **3. MOSA wall-tiles 15x20 cm:**

- Manufacturer: MOSA
- Color: cream-beige marbled (2230)
- Size: 15x20 cm
- Very solid biscuit (not porous!)
- Excellent coating
- Coating also on edges
- High-quality finish

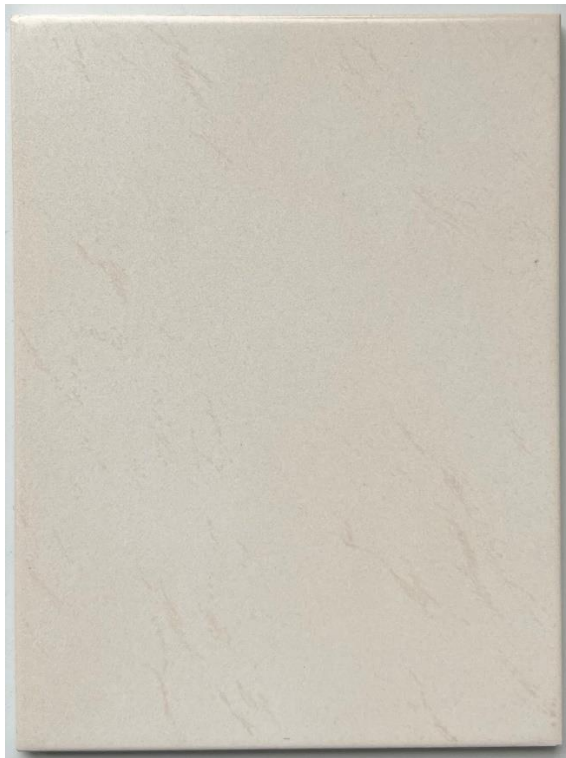


#### **MADE IN HOLLAND**

- Euro-pallettes with uniform item (no mixed leftover-pallettes!)
- Approx. 95m<sup>2</sup> per palette
- Weight: approx. 1 t per palette

Export-price (excl. VAT) for total amount of approx. 190 m<sup>2</sup>: **EUR 3,90/m<sup>2</sup>**

#### **Sample pictures:**



#### **4. MOSA wall-tiles 15x20 cm:**

- Manufacturer: MOSA
- Colour: beige cream (1890)
- Size: 15x20 cm
- Very solid white biscuit (not porous!)
- Excellent coating
- Coating also on edges
- High-quality finish

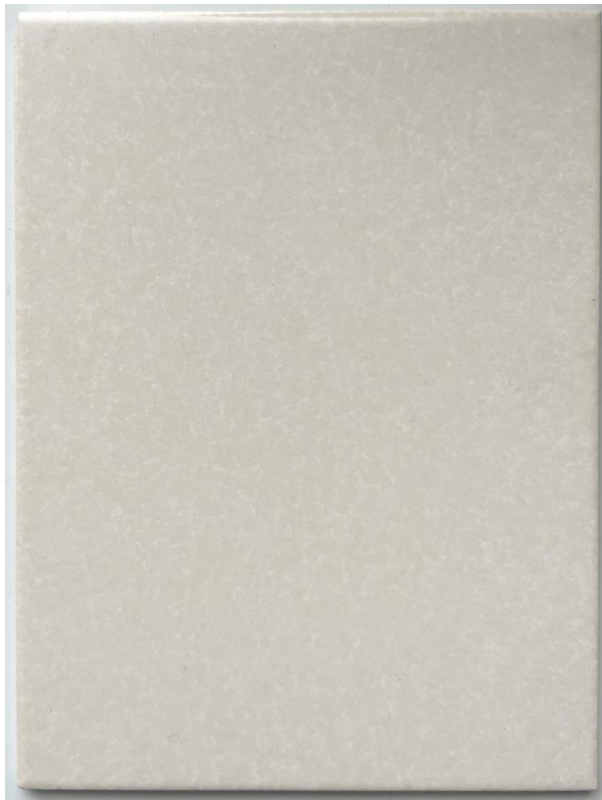


#### **MADE IN HOLLAND**

- Euro-pallettes with uniform item (no mixed leftover-pallettes!)
- Approx. 95m<sup>2</sup> per palette
- Weight: approx. 1 t per palette
- 20" Container: approx. 2.000 - 2.200 m<sup>2</sup>

Export-price (excl. VAT) for total amount of approx. 190 m<sup>2</sup>: **EUR 3,90/m<sup>2</sup>**

#### **Sample pictures:**





## **5. MOSA porcelain stoneware floor-tiles \*HEAVY DUTY\*:**



- Manufacturer: MOSA
- Measurements: 10x10 and 15x15 cm
- Colors / quantities:
- 10x10 brown (S91) = approx. 378 m<sup>2</sup>
- 10x10 stone beige flamed (S92) = approx. 718 m<sup>2</sup>
- 10x10 stone gray flamed (S93) = approx. 4.788 m<sup>2</sup>
- 10x10 stone gray (S94) = approx. 2.952 m<sup>2</sup>
- 15x15 flamed beige (S92) = approx. 14 m<sup>2</sup>
- 15x15 yellow/beige flamed (G35V) = approx. 28 m<sup>2</sup>
- Heavy duty tiles for INSIDE AND OUTSIDE
- Various colors and designs (view pictures)
- Material goes through (not only coating)
- Ideal usage for apartments, industry, schools, offices, showrooms, restaurants etc.
- High-quality finish

Further specifications and information on inquiry!

### **MADE IN HOLLAND**

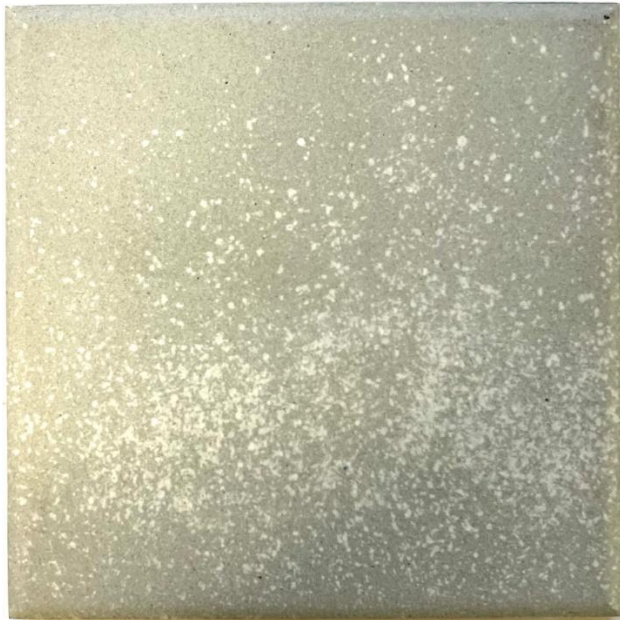
- Euro-pallettes with uniform item (no mixed leftover-pallettes!)
- In average 50-70 m<sup>2</sup> per palette
- 20" Container: approx. 1.500 – 1.700 m<sup>2</sup>

Export-price (excl. VAT) for total amount of approx. 11.607 m<sup>2</sup>: **EUR 3,29/m<sup>2</sup>**

Export-price (excl. VAT) for minimum amount of approx. 500 m<sup>2</sup>: **EUR 3,79/ m<sup>2</sup>**

Sample pictures:









## **6. SPHINX high-quality ceramic floor-tiles 16.5 x 16.5 cm:**

- Manufacturer: Sphinx
- Measurements: 16.5 x 16.5 cm
- Various colors: white, cream, grey and beige
- Very solid white biscuit (not porous!)
- Excellent coating
- Coating also on edges
- Ideal usage for apartments, industry, offices, showrooms, restaurant etc.
- High-quality finish



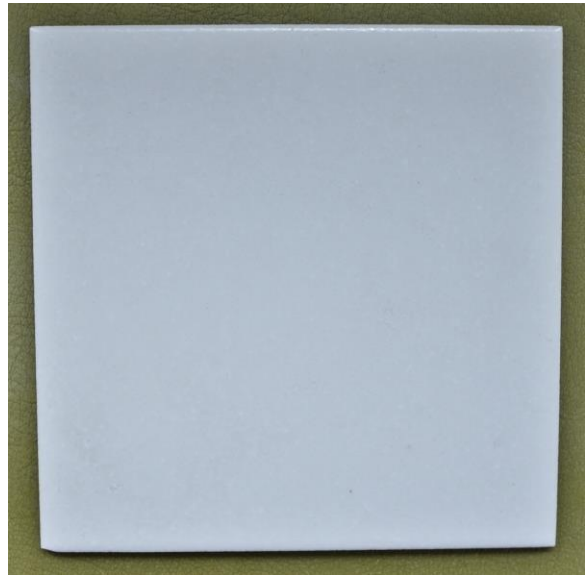
### **MADE IN HOLLAND**

- Euro-pallettes with uniform item (no mixed leftover-pallettes!)
- In average 66 m<sup>2</sup> per palette
- 20" Container: approx. 2.000 m<sup>2</sup>

Export-price (excl. VAT) for total amount of approx. 3.500 m<sup>2</sup>: **EUR 2,90/m<sup>2</sup>**

Export-price (excl. VAT) for minimum amount of approx. 500 m<sup>2</sup>: **EUR 3,30/ m<sup>2</sup>**

Sample pictures:





## **7. BATHROOM-SET in Beige incl. bath + washbasin + bidet + shelf:**

Bathroom-Set in beige color including following 4 components:

- KALDEWEI / BETTE steel bathtub in e.g. 170x75 and 170x80 cm
- NOVO-BOCH washbasin made of high quality porcelain in the width of 50 and 55 cm
- SPHINX Hanging bidet with overflow
- Ceramic shelf (for above the washbasin)

**MADE IN GERMANY / HOLLAND / BELGIUM**

**KALDEWEI**  
Europas Nr. 1 in Badewannen

**BETTE**  
Baden und Duschen

1 Set includes 4 items!

Export-price (excl. VAT) for purchase of approx. 100 sets: **EUR 45.- / set**

Approximately 100 sets fit into 1 x 20" container.



 **Sphinx**

Sample photos:



## **8. BATHROOM-SET in gray incl. washbasin + WC + tank + shelf:**

Bathroom set in gray including following 4 components:

- KERAMAG / NOVO-BOCH washbasin in 50 and 55 cm width
- IDEAL STANDARD / VITRA Stand-WC with connection to the wall (horizontal)
- Water-tank with water saving technology
- Ceramic shelf (for above the washbasin)

**MADE IN GERMANY / BELGIUM**

1 Set includes 4 items!

Export-price (excl. VAT) for purchase of approx. 200 sets: **EUR 55.- / set**

Approximately 200 sets fit into 1 x 40 'container.

Sample photos:



**KERAMAG**

**iSideal**  
STANDARD

**NOVOBOCH**

**9. BATHROOM-SET KERAMAG in cream-colour incl. washbasin + Combination WC + water-tank + shelf + pedestal:**

Bathroom set in cream colour including following 5 components:

- KERAMAG washbasin in 40-55 cm width
- KERAMAG cover or standing pedestal (for the washbasin)
- KERAMAG combination Stand-WC with outlet to the floor
- KERAMAG ceramic water-tank
- KERAMAG ceramic shelf (for above the washbasin)

**KERAMAG**

**MADE IN GERMANY**

1 Set includes 5 items!

Export-price (excl. VAT) for purchase of approx. 15 sets: **EUR 99.- / set**

Sample photos:





#### **10. Special KERAMAG bathroom set washbasin 55cm + WC in white:**

Bathroom set in white with the following 2 components made of high quality porcelain:

- KERAMAG washbasin 55 x 43 cm
- KERAMAG Stand-WC with outlet to the wall

**KERAMAG**

The price refers to 1 Set of 2 parts.

**MADE IN GERMANY**

Export-price (excl. VAT) for purchase of approx. 250 sets: **EUR 34.- / set**

Available on request matching water-tank from German production for EUR 15.-!

Sample photos:



### **11. Special brands BATHROOM SET washbasin 55 / 65cm + WC in White:**

Bathroom set in white with the following 2 components made of high quality porcelain:

- KERAMAG washbasin 65 x 51 cm (about 250 pieces) and 55 x 43 cm (about 50 pieces)
- NOVO-BOCH Stand-WC with outlet to the wall (about 300 pieces)

The price refers to 1 Set of 2 parts.

**MADE IN GERMANY / BELGIUM**

Export-price (excl. VAT) for purchase of approx. 300 sets: **EUR 35.- / set**

A total of 50 pieces optional half-pedestals for net **EUR 12,00 / pc.** available.  
(not required for installation)



Sample photos:



## **12. Special brands BATHROOM SET washbasin 60cm + WC in White:**

Bathroom set in white with the following 2 components made of high quality porcelain:

- SPHINX washbasin 60 x 50 cm
- NOVO-BOCH Stand-WC with outlet to the wall



The price refers to 1 Set of 2 parts.

**MADE IN HOLLAND / BELGIUM**

Export-price (excl. VAT) for purchase of approx. 230 sets: **EUR 22.- / set**



Sample photos:





### **13. Special SPHINX bathroom set washbasin 60cm + WC in White:**

Bathroom set in white with the following 2 components made of high quality porcelain:

- SPHINX washbasin 60 x 46 cm
- SPHINX Stand-WC with outlet to the wall



#### **MADE IN HOLLAND**

The price refers to 1 Set of 2 parts.

Export-price (excl. VAT) for purchase of approx. 260 sets: **EUR 24.- / set**

Sample photos:



#### **14. Special SPHINX bathroom set washbasin + half-pedestal + WC in White:**

Bathroom set in white with the following 3 components made of high quality porcelain:

- SPHINX washbasin 65 x 48 cm
- Matching half-pedestal
- SPHINX Stand-WC with outlet to the floor



**MADE IN HOLLAND**

The price refers to 1 Set of 3 parts.

Export-price (excl. VAT) for purchase of approx. 330 sets: **EUR 29.- / set**

On request we can offer the WC also with the outlet to the wall

Sample photos:



### **15. Luxurious designer washbasin sets of glass with accessories and fittings:**

- Exclusive & modern design
- Heavy construction
- High-quality finish
- Set consisting of washbasin, substructure and fitting
- In part, with glass table
- With faucet/tap in chrome

Export-price (excl. VAT) for total amount of approx. 6 pcs.: **EUR 79,00 / pc.**

Delivery: Ex stock in Hamburg

Sample photos:





**16. Special compact hand-washbasin 40x30 cm in white:**

- Size: 40 x 30 cm
- Colour: White
- Timeless design
- Very compact with a spacious pool
- Partially only with pre-drilled holes for a tap hole
- High quality porcelain - not a cheap DIY product



**MADE IN BELGIUM**

Export-price (excl. VAT) for total amount of approx. 100 pcs.: **EUR 12,90 / pc.**

The washbasins are packed on one pallet.

Sample photos:



### **17. Novo-Boch quality brand urinals:**

- Colours: Cream-white, beige and grey
- Timeless Design
- Hygienic and odor: These urinals are fully glazed inside. Thus the urinal is fully cleaned by rinsing and the smell avoided!
- High-quality processing
- High quality porcelain - not a cheap product

#### **MADE IN BELGIUM**



Export-price (excl. VAT) for total amount of approx. 700 pcs.: **EUR 17,50 / pc.**

Export-price (excl. VAT) for minimum amount of approx. 300 pcs.: **EUR 19,90 / pc**

Delivery: Ex stock in Hamburg

One pallet includes approx. 50 pcs.

The pallets have external dimensions of approximately 115 x 105 x 220 cm (length x width x height).

Sample photos:



## **18. Swiss brands taps:**

- Different Colours
- Different designs
- Single-lever mixer
- Very solid and heavy types
- High-quality



### **MADE IN SWITZERLAND!**

Export-price (excl. VAT) for total amount of approx. 500 pcs.: **EUR 16,90 / pc.**

The taps are individually packaged.

Sample photos:





### **19. German brands taps:**

- Different Colours
- Different designs
- Single-lever mixer for bathtub, shower, bidet and washbasin
- Very solid and heavy types
- High-quality

**MADE IN GERMANY!**

Export-price (excl. VAT) for total amount of approx. 120 pcs.: **EUR 14,00 / pc.**

The taps are individually packaged.

Sample photos:



**schläfer**

 **newform**



## **20. IDEAL STANDARD 3-hole taps:**

- Manufacturer: Ideal Standard
- Colour: Chrome
- With pop-up waste
- Very solid and heavy type
- Timeless design
- High-quality

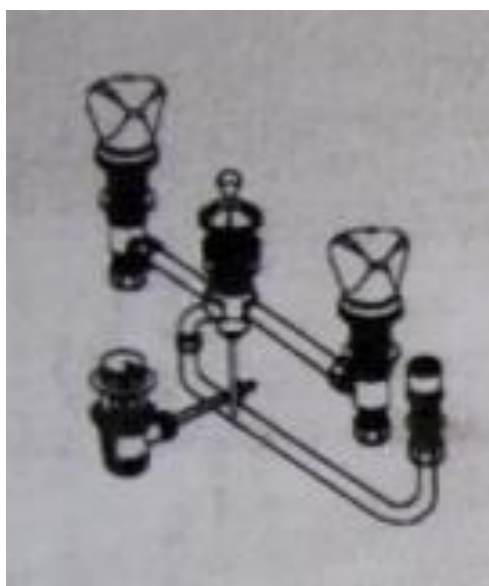


### **MADE IN GERMANY**

Suggested retail price much higher!

Export-price (excl. VAT) for total amount of approx. 80 pcs.: **EUR 14,00 / pc.**

Sample photos:



## **21. ROKAL HANSA cold-water wall faucet tap**

- Colour: chrome
- Swivel spout
- Different handles available
- 2 different types of spouts available (View picture!)
- Timeless design
- High-quality finish

**ROKAL**

### **MADE IN GERMANY**

Export-price (excl. VAT) for total amount of approx. 700 pcs.: **EUR 6,90 / pc.**

Export-price (excl. VAT) for minimum amount of approx. 200 pcs.: **EUR 8,50 / pc.**

Sample picture:





## **22. ROKAL HANSA brand washbasin faucets white**

- Colour: white
- Timeless Design
- High-quality finish



### **MADE IN GERMANY**

Export-price (excl. VAT) for total amount of approx. 400 pcs.: **EUR 16,00 / pc.**

Delivery: Ex stock in Hamburg

Photos:



### **23. ROKAL HANSA brand washbasin faucets chrome**

- Colour: chrome
- Timeless Design
- High-quality finish

**MADE IN GERMANY**

Export-price (excl. VAT) for total amount of approx. 60 pcs.: **EUR 19,00 / pc.**

Delivery: Ex stock in Hamburg

Photos:



**24. ROKAL HANSA brand washbasin faucets black / gold**

- Colour: black / gold
- Timeless Design
- High-quality finish

**MADE IN GERMANY**



Export-price (excl. VAT) for total amount of approx. 100 pcs.: **EUR 25,00 / pc.**

Delivery: Ex stock in Hamburg

Photos:





## **25. ROKAL HANSA brand shower faucets white**

- Colour: white
- Timeless Design
- High-quality finis

**MADE IN GERMANY**

Export-price (excl. VAT) for total amount of approx. 220 pcs.: **EUR 15,00 / pc.**

Delivery: Ex stock in Hamburg

Photos:



**ROKAL**

 **HANSA**

## **26. VENLO brand washbasin / kitchen faucets:**

- Colour: chrome with brown handles
- High spout
- Swivel spout
- Timeless Design
- High-quality finish

### **MADE IN HOLLAND**

Export-price (excl. VAT) for total amount of approx. 20 pcs.: **EUR 21,00 / pc.**

Delivery: Ex stock in Hamburg

Sample photos:



## **27. VENLO brands bathtubs faucets:**

- Colour: chrome with brown handles
- Connection for shower hose and bath filler
- Very solid design
- Timeless Design
- High-quality finish

### **MADE IN HOLLAND**

Export-price (excl. VAT) for total amount of approx. 20 pcs.: **EUR 26,00 / pc.**

Delivery: Ex stock in Hamburg

Sample photos:





## **28. HANSA brand tubs outlets - Fittings:**

- Colour: Red
- Two different lengths
- Solid construction
- Timeless Design
- High-quality finish



### **MADE IN GERMANY**

Export-price (excl. VAT) for total amount of approx. 300 pcs.: **EUR 4,20 / pc.**

Delivery: Ex stock in Hamburg

Sample photos:



**29. DAMIXA showerheads in blue:**

- Colour: Blue
- Standard type
- With a hand grip
- Good quality

**damixa™**

**MADE IN DENMARK**

Export-price (excl. VAT) for total amount of approx. 500 pcs.: **EUR 0,99 / pc.**

Photo:



### **30. High quality FRANKE quartz Kitchen Sinks:**

- Manufacturer: Franke
- Material: Fraquartz (very robust and shock resistant)
- Prestige Collection
- External dimensions: 99.5 x 56 cm and 86.5 x 56 cm
- Luxury Models: Very large and spacious bowls
- Colours: White and Ivory (Cream)
- Without shown accessories
- High-quality finish



Original suggested retail price: about € 500, - / pc !!

Export-price (excl. VAT) for total amount of approx. 200 pcs.: **EUR 69.00 / pc.**

The sinks are individually packed in boxes and stored on pallets.

Sample photos:





### **31. Exclusive SUTER Swiss undermount & topmount double bowl kitchen sinks:**

- Manufacturer: Suter
- Material: Very thick and solid 18/10 stainless steel
- External dimensions: 82 x 48 cm and 84 x 56 cm
- Bowl depth: 20 cm and 25 cm
- Luxury Models: Very large and spacious bowls
- Elegant undermount and topmount versions!
- Without shown accessories
- Very high quality finish



The Dynamic serie is an extravagant appearance in shape and size. The bowls create an atmosphere of generosity.

Original suggested retail price: about € 625.- / piece!

#### **MADE IN SWITZERLAND!**

Export-price (excl. VAT) for total amount of approx. 740 pcs.: **EUR 99,00 / pc.**

Export-price (excl. VAT) for minimum amount of approx. 100 pcs.: **EUR 139,00 / pc.**

Delivery: Ex stock in Hamburg

The sinks are individually packed in styrofoam and stored on pallets.

Sample photos:



### **32. High ALAPE luxury kitchens sinks:**

- Manufacturer: Alape
- Material: enameled steel
- Dimensions: 105 x 48 cm, 97 x 50.5 cm and 84 x 56 cm
- Luxury Models: Very large and spacious bowls
- Colour: White
- Partial with pictured accessories
- High-quality finish

#### **MADE IN GERMANY**

Original suggested retail price is much higher!

Export-price (excl. VAT) for total amount of approx. 260 pcs.: **EUR 39,00 / pc.**

Delivery: Ex stock in Hamburg

The sinks are individually packed in boxes and stored on pallets.

Sample photos:



### **33. GERMAN-MADE Stainless steel kitchen sinks 86x43.5 cm:**

**BLANCO**

- Material: durable 18/10 stainless steel
- Manufacturer: Blanco
- With 1 bowl and 1 tray
- Outer measurement: 86x43.5 cm
- High-quality finish

#### **MADE IN GERMANY**

Export-price (excl. VAT) for total amount of approx. 1.400 pcs.: **EUR 14,20 / pc.**

Export-price (excl. VAT) for minimum amount of approx. 400 pcs.: **EUR 17,00 / pc.**

Delivery: Ex stock in Hamburg

The sinks are packed on Euro-pallets. On one pallet there are stored 40-60 pcs.

Sample pictures:





### **34. GERMAN-MADE Stainless steel kitchen sinks 86x43.5 cm:**

- Material: durable 18/10 stainless steel
- Manufacturer: Blanco and Teka
- With 1 bowl and 1 tray
- Outer measurement: 86x43.5 cm
- High-quality finish

**BLANCO**



#### **MADE IN GERMANY**

Export-price (excl. VAT) for total amount of approx. 900 pcs.: **EUR 14,90 / pc.**

Export-price (excl. VAT) for minimum amount of approx. 400 pcs.: **EUR 17,90 / pc.**

Delivery: Ex stock in Hamburg

The sinks are packed on Euro-pallets. On one pallet there are stored 40-50 pcs.

#### **Sample pictures:**



### **35. GERMAN-MADE Stainless steel kitchen sinks 80 cm:**

- Material: durable 18/10 stainless steel
- Manufacturer: Blanco and Rieber
- With 1 bowl and 1 tray
- Outer measurements: 80x60 cm = 300 pc.
- Outer measurements: 80x50 cm = 200 pc.
- High-quality finish

**BLANCO**

**Rieber**  
Qualität - made in Germany.

### **MADE IN GERMANY**

Export-price (excl. VAT) for total amount of approx. 500 pcs.: **EUR 16,90 / pc.**

Delivery: Ex stock in Hamburg

The sinks are packed on Euro-pallets.

Sample pictures:





### **36. GERMAN-MADE Stainless steel kitchen sinks 100 cm:**

- Material: durable 18/10 stainless steel
- Manufacturer: Blanco and Rieber
- With 1 bowl and 1 tray
- Outer measurements: 100x50 cm and 100x60 cm
- High-quality finish

**BLANCO**

**Rieber**  
Qualität - made in Germany.

#### **MADE IN GERMANY**

Export-price (excl. VAT) for total amount of approx. 800 pcs.: **EUR 16,90 / pc.**

Export-price (excl. VAT) for minimum amount of approx. 400 pcs.: **EUR 18,90 / pc.**

Delivery: Ex stock in Hamburg

The sinks are packed on Euro-pallets.

Sample pictures:





### **37. GERMAN-MADE stainless steel double bowl kitchen sinks 80 cm:**

- Material: durable 18/10 stainless steel
- Manufacturer: Blanco and Rieber
- With 2 bowls
- Outer measurements: 80x50 cm and 80x60 cm
- High-quality finish

**BLANCO**

**Rieber**  
Qualität - made in Germany.

#### **MADE IN GERMANY**

Export-price (excl. VAT) for total amount of approx. 700 pcs.: **EUR 22,00 / pc.**

Export-price (excl. VAT) for minimum amount of approx. 200 pcs.: **EUR 24,00 / pc.**

Delivery: Ex stock in Hamburg  
The sinks are packed on Euro-pallets.

Sample pictures:



### **38. GERMAN-MADE stainless steel double bowl kitchen sinks 100 cm:**

- Material: durable 18/10 stainless steel
- Manufacturer: Blanco and Rieber
- With 2 bowls
- Outer measurements: 100x50 cm and 100x60 cm
- High-quality finish



#### **MADE IN GERMANY**

Export-price (excl. VAT) for total amount of approx. 300 pcs.: **EUR 23,00 / pc.**

Export-price (excl. VAT) for minimum amount of approx. 200 pcs.: **EUR 25,00 / pc.**

Delivery: Ex stock in Hamburg  
The sinks are packed on Euro-pallets.

#### **Sample pictures:**





### **39. GERMAN-MADE Stainless steel kitchen sinks 120x60 cm:**

- Material: durable 18/10 stainless steel
- Manufacturer: Blanco and Rieber
- With 2 bowls and 1 tray
- Outer measurements: 120x60 cm
- High-quality finish

**BLANCO**

**Rieber**  
Qualität - made in Germany.

#### **MADE IN GERMANY**

Export-price (excl. VAT) for total amount of approx. 550 pcs.: **EUR 29,00 / pc.**

Export-price (excl. VAT) for minimum amount of approx. 250 pcs.: **EUR 33,00 / pc.**

Delivery: Ex stock in Hamburg  
The sinks are packed on Euro-pallets.

Sample pictures:





#### **40. GERMAN-MADE Stainless steel kitchen sinks 120x50 cm:**

- Material: durable 18/10 stainless steel
- Manufacturer: Blanco and Rieber
- With 2 bowls and 1 tray
- Outer measurements: 120x50 cm
- High-quality finish

**BLANCO**

**Rieber**  
Qualität - made in Germany.

#### **MADE IN GERMANY**

Export-price (excl. VAT) for total amount of approx. 550 pcs.: **EUR 27,00 / pc.**

Export-price (excl. VAT) for minimum amount of approx. 250 pcs.: **EUR 29,00 / pc.**

Delivery: Ex stock in Hamburg  
The sinks are packed on Euro-pallets.

Sample pictures:



**41. RIEBER modul sinks 50x70 cm:**

- Material: durable 18/10 stainless steel
- Manufacturer: Rieber
- Outer dimensions: 50 x 70 cm



**MADE IN GERMANY**

Export-price (excl. VAT) for total amount of approx. 120 pcs.: **EUR 15,00 / pc.**

Delivery: Ex stock in Hamburg  
The sinks are packed on Euro-pallets.

Sample pictures:



#### **42. High-quality WC seat-covers:**

- Material: very durable, unbreakable material
- German, French and Italian brand name manufacturers: for example Allibert, Richter+Frenzel, Sanit, Abusanitair
- Suitable for all standard WCs
- Various colours and models
- Including mounting material

#### **MADE IN GERMANY / FRANCE / ITALY**

Export-price (excl. VAT) for purchase of total amount of approx. 2.800 pcs.:  
**EUR 2,90 / pc.**

Export-price (excl. VAT) for purchase of minimum amount of approx. 250 pcs.:  
**EUR 4,80 / pc.**

Delivery: Ex stock in Hamburg  
The seat-covers are separately packed.  
Space: 1x 40" Container

Sample pictures:





#### **43. High-quality WC seat-covers:**

- Material: very durable, unbreakable material
- German brand name manufacturers: for example Sanit, Abusantair
- Suitable for all standard WCs
- Colour: white
- Various models
- Including mounting material

#### **MADE IN GERMANY**

Export-price (excl. VAT) for purchase of total amount of approx. 1.000 pcs.:  
**EUR 4,80 / pc.**

Delivery: Ex stock in Hamburg  
The seat-covers are separately packed.

Sample pictures:



#### **44. High-Quality German made water tanks:**

- German brand names: for example Sanit, Abusanitair
- Suitable for all standard WCs
- Water-saving device
- Low noise float valve
- Insulation against condensation water
- Various colours and models
- including angle valve

#### **MADE IN GERMANY**

Export-price (excl. VAT) for purchase of total amount of approx. 550 pcs.:

**EUR 11,50 / pc.**

Delivery: Ex stock in Hamburg

The water-tanks are separately packed in boxes.

Sample pictures:



#### **45. Italian designer chairs:**

- High-quality wood
- Insensitive and durable fabric covering
- Exclusive design
- Various colours and models
- Chairs are packed originally in nylons and boxes

#### **MADE IN ITALY**

Export-price (excl. VAT) for purchase of total amount of approx. 120 pcs.:  
**EUR 16.00 / pc.**

Sample pictures:





#### **46. High-quality wooden dining tables:**

- Colours such as: mahogany, walnut, cherry, oak, Natural
- Various models and designs
- Partial with folding insert, extendable pull-out
- High-quality finish

#### **Sizes such as:**

- 150 x 100 cm
- 137 x 97 cm, extendable to 177 cm
- 110 cm diameter (round shape), 40 cm extendable
- 110 cm diameter (round shape), 45 or 90 cm extendable
- 120 cm diameter (round shape), 50 and 100 cm extendable

#### **MADE IN ITALY**

Export-price (excl. VAT) for purchase of total amount of approx. 200 pcs.:

**EUR 42.00 / pc.**

#### **Sample photos:**



**47. EGRO luxurious Salt and Pepper made of marble:**

- Material spreader:  
White-gray marble  
(Marbling may be lighter or darker)
- Model: Jeunesse
- Timeless and elegant design
- Including Menage (ideal for an oil and acetic vial)
- Suitable for every kitchen, every table and every restaurant!
- Very stylish and classy by the original marble
- High quality



**MADE IN SWITZERLAND**

Export-price (excl. VAT) for purchase of total amount of approx. 450 pcs.:  
**EUR 2,90 / pc.**

Sample photos:

